



Community Mapping & Humanitarianism

(the Geo kind)

Mapping Humanitarianism Workshop, January 20, 2011, GWU
Mikel Maron, mikel_maron@yahoo.com, @mikel

(Practitioner)

Humanitarian OpenStreetMap Team



<http://hot.openstreetmap.org>

GroundTruth Initiative

**GroundTruth
Initiative**

<http://groundtruth.in/>

Technologies

OpenStreetMap



<http://www.openstreetmap.org>

kinda like Wikipedia for maps

Technologies

Ushahidi



<http://ushahidi.com/>

crisis reporting

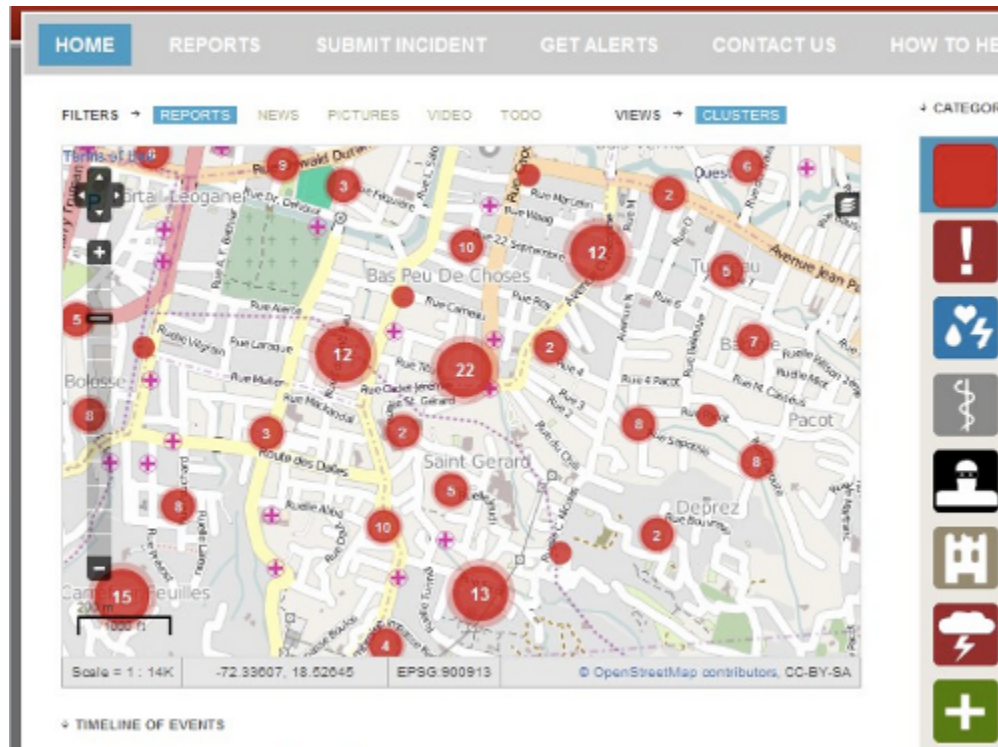
Technologies

Open, etc.



Compelling Evidence

Haiti Earthquake Response



<http://www.unfoundation.org/assets/pdf/disaster-relief-20-the.pdf>

Compelling Evidence

Map Kibera



<http://mapkibera.org/>

Trust? Reliability? Verifiability?

The usual question

Crowdsourcing

The wrong question and the wrong term

*Successful "crowdsourcing" projects are very complex structures



Communities and Relationships

Technology is adapting to and enhancing the real structure of *human* societies



How Do We Foster Community in the Humanitarian Context?

that is the question

Technology Volunteerism Developing Countries is very different

than in Washington D.C.



You have to Hustle

to have food cooking at the end of the day



Technology Does Make Change

- Promotes Conversation
- Open Data Persists as a Common Good
- User/Community Centered

But

- Power imbalance does not automatically change

Break the Habit of Aid

People are still thought of as recipients, rather than leaders

Kibera brought to you by...



Love Data. What about Stories?

Data is an easy win in Humanitarianism. Expression and voices of people, hard to listen.

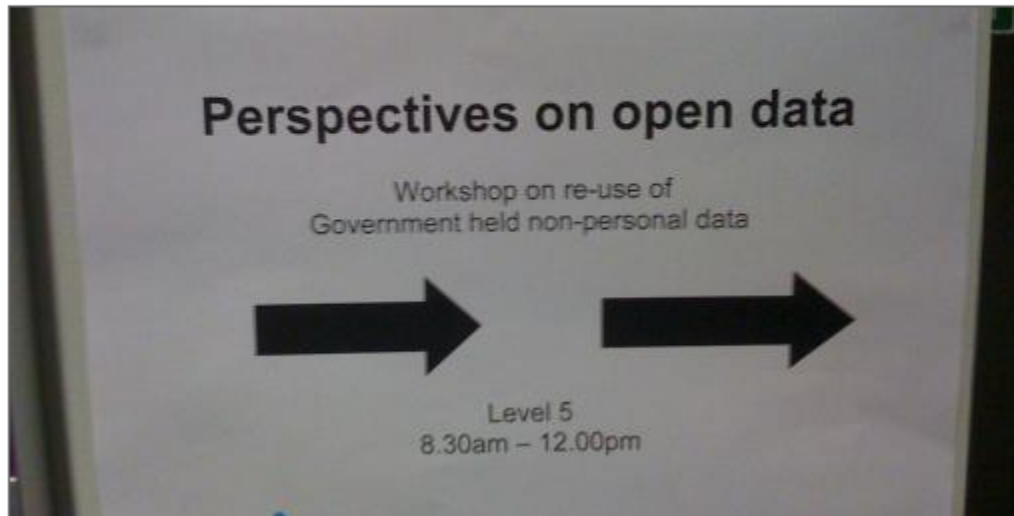


Commercialization of Humanitarian Tech

Communities are big business

Why We're Worried about Google's Deal with the World Bank

Submitted by Global Integrity on 18 January 2012 - 2:17pm



<http://www.globalintegrity.org/blog/google-world-bank-map-deal>

The Project Timeline Does Not Support Communities

Relationships develop on a different pace than projects

The Emergency Response Cycle Does Not Support Sustainable Communities

COSMHA(Haiti OpenStreetMap)



Change can happen, slowly

COSMHA is lead on projects to HOT
Soley Leve is entirely grassroots



<http://soley-leve.org/map/>

Thanks

Mikel Maron, mikel_maron@yahoo.com, @mikel